

Configure
Filters

Audio Output (1 track)
Copy
Configure
Filters
Shift: 0 ms

Output Format
Mkv Muxer
Configure

Time: 00:00:10.232 / 00:00:37.722 Frame type: P-FRM (00)

Configure
Filters

Audio Output (1 track)
Copy
Configure
Filters
Shift: 0 ms

Output Format
Mkv Muxer
Configure

Time: 00:00:32.032 / 00:00:37.722 Frame type: I-FRM (00)

Configure
Filters

Audio Output (1 track)
Copy
Configure
Filters
Shift: 0 ms

Output Format
Mkv Muxer
Configure

Time: 00:00:33.722 / 00:00:37.722 Frame type: P-FRM (00)

Configure
Filters

Audio Output (1 track)
Copy
Configure
Filters
Shift: 0 ms

Output Format
Mkv Muxer
Configure

Time: 00:00:34.968 / 00:00:37.722 Frame type: P-FRM (00)

Configure
Filters

Audio Output (1 track)
Copy
Configure
Filters
Shift: 0 ms

Output Format
Mkv Muxer
Configure

Time: 00:00:35.232 / 00:00:37.722 Frame type: P-FRM (00)

Configure
Filters

Audio Output (1 track)
Copy
Configure
Filters
Shift: 0 ms

Output Format
Mkv Muxer
Configure

Time: 00:00:35.532 / 00:00:37.722 Frame type: P-FRM (00)

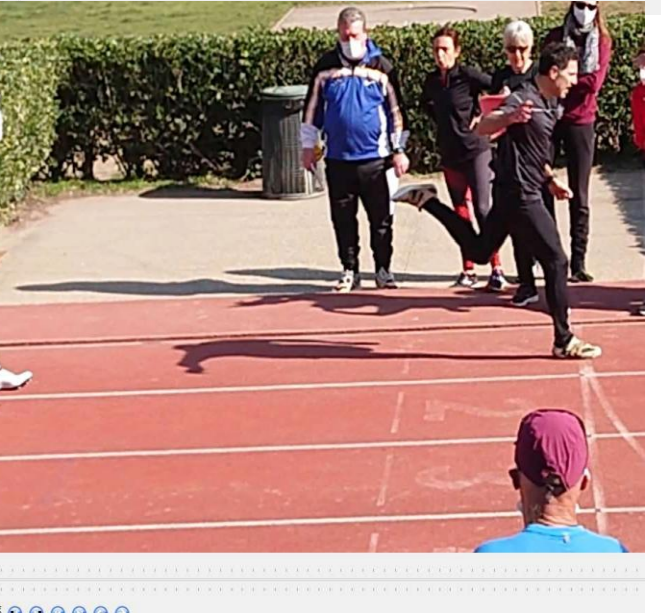


Timeline and playback controls for the first frame. Time: 00:00:12.276 / 00:00:37.181. Frame type: P-FRM (00).

Timeline and playback controls for the second frame. Time: 00:00:31.458 / 00:00:37.181. Frame type: P-FRM (00).

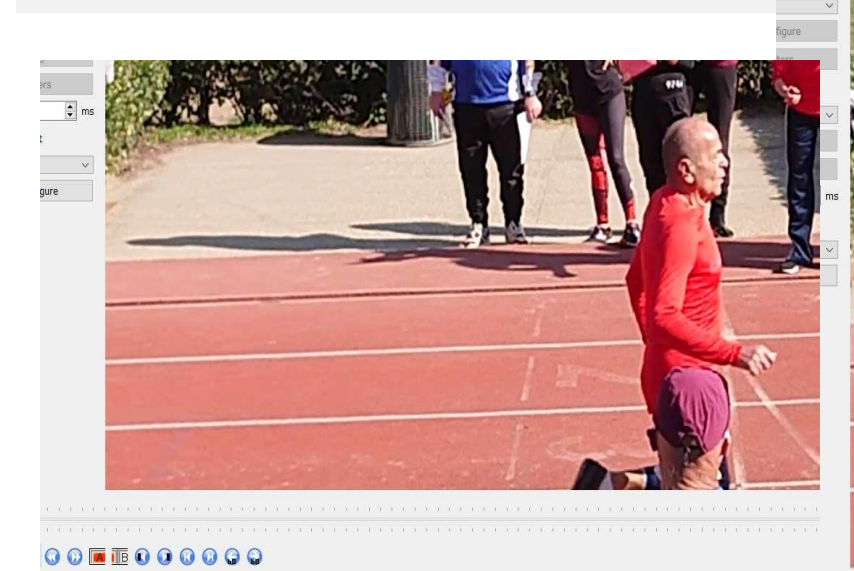
2.mp4 - Avidemux
Edit View Video Audio Auto Tools Go Custom Help

Timeline and playback controls for the third frame. Time: 00:00:33.193 / 00:00:37.181. Frame type: P-FRM (00).



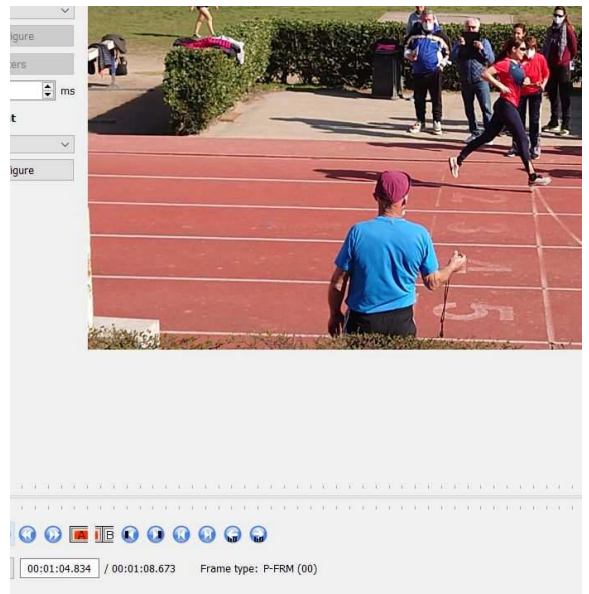
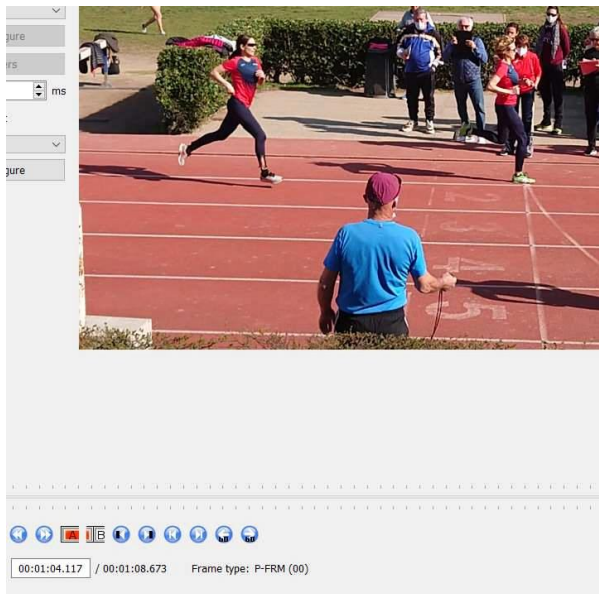
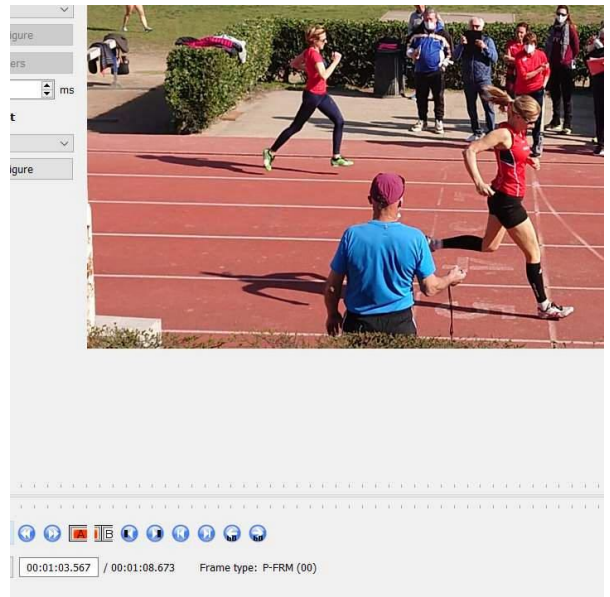
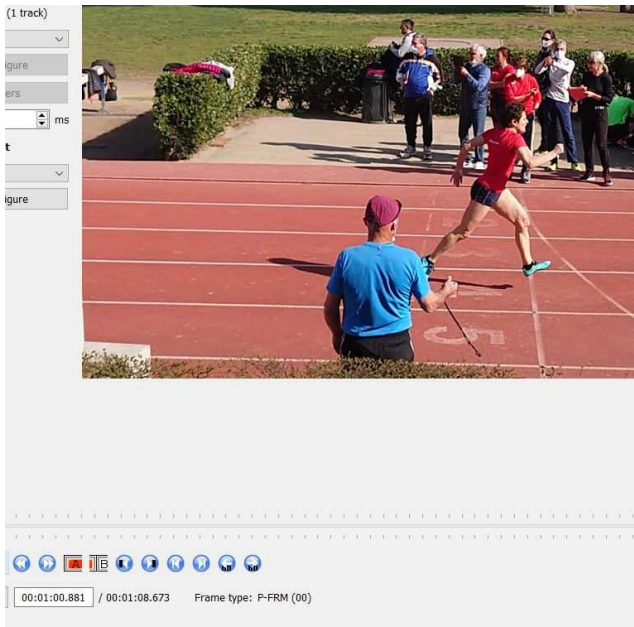
Timeline and playback controls for the fourth frame. Time: 00:00:32.309 / 00:00:37.181. Frame type: P-FRM (00).

Timeline and playback controls for the fifth frame. Time: 00:00:34.344 / 00:00:37.181. Frame type: P-FRM (00).



Timeline and playback controls for the sixth frame. Time: 00:00:34.344 / 00:00:37.181. Frame type: P-FRM (00).

Timeline and playback controls for the seventh frame. Time: 00:00:34.344 / 00:00:37.181. Frame type: P-FRM (00).



Filters

put (1 track)

Configure

Filters

0 ms

Format

er

Configure

00:00:50.373 / 00:00:57.631 Frame type: P-FRM (00)

Filters

t (1 track)

figure

Filters

0 ms

at

figure

00:00:47.737 / 00:00:57.631 Frame type: P-FRM (00)

Filters

(1 track)

0 ms

00:00:53.375 / 00:00:57.631 Frame type: P-FRM (00)

is Go Custom Help

Copy

Configure

Filters

Shift: 0 ms

Output Format

Mkv Muxer

Configure



Navigation icons: play, stop, previous, next, full screen, volume, and other controls.

0 ms

at

figure

tracky

figure

ers

ms

figure

Go to next frame [RIGHT]

00:00:24.586 / 00:01:07.589 Frame type: P-FRM (00)

00:01:03.117 / 00:01:07.589 Frame type: P-FRM (00)

figure

ers

t (1 track)

figure

ers

ms

at

figure

00:01:03.600 / 00:01:07.589 Frame type: P-FRM (00)

figure

ers

(1 track)

figure

ers

ms

t

figure

00:01:03.901 / 00:01:07.589 Frame type: P-FRM (00)

figure

ers

(1 track)

figure

ers

ms

t

figure

00:01:03.817 / 00:01:07.589 Frame type: P-FRM (00)

ers

(1 track)

figure

ers

ms

at

figure

00:01:04.868 / 00:01:07.589 Frame type: P-FRM (00)

figure

ers

ms

t

figure

00:01:05.835 / 00:01:07.589 Frame type: P-FRM (00)

